

Sections below: **Minimum Requirements** (pg. 1) | **Windows Vista Setup** (pg. 2-3) | **Still can't connect** (pg. 4-8) | **More to try** (pg. 9)

Minimum Requirements

Wireless Card:

An **802.11a/g** wireless network card that supports **WPA** or **WPA2**. 802.11b (wireless b) wireless network cards do **NOT** work.

Note: Some less expensive wireless cards may support Wireless G but do not support WPA fully. If you experience problems, you can install the latest driver for your wireless card which is usually available through the card or computer manufacturer's website.

Operating System:

Windows Vista

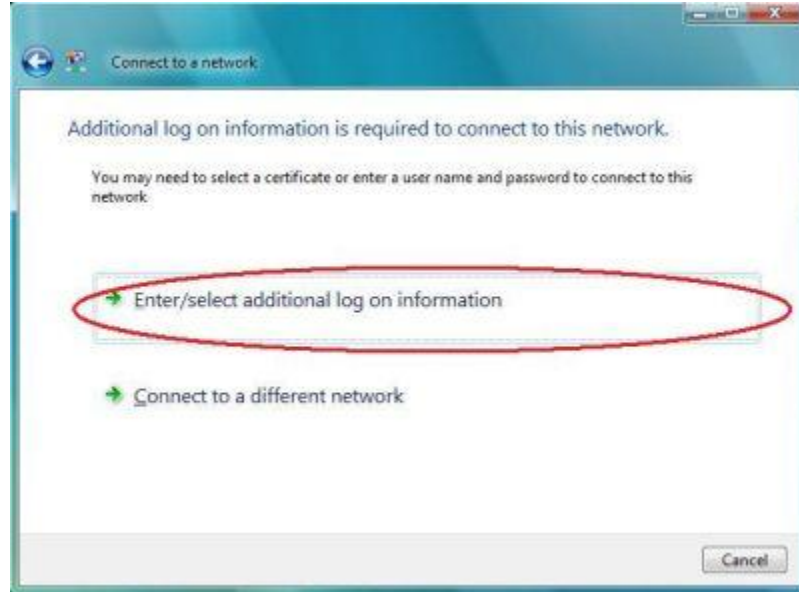
Prerequisites:

- Administrator rights on the computer
- Windows must be managing the wireless connections
- Current Anti-Virus protection
- Firewalls beyond the Windows Firewall, IDS/IPS, or security systems on the machine must be turned off or uninstalled

Windows Vista Setup

Windows Vista computers should automatically connect to the **BYUI** network. Do **NOT** use **BYUI-Setup**.

1. Right click the wireless connection icon in the bottom right corner of the screen and select **View Available Wireless networks**.
2. Double click the **BYUI** network.
3. Once it is connected to the **BYUI** network you may see a popup. Click on it. You will see a window where you will need to click **Enter/Select additional log on information**.



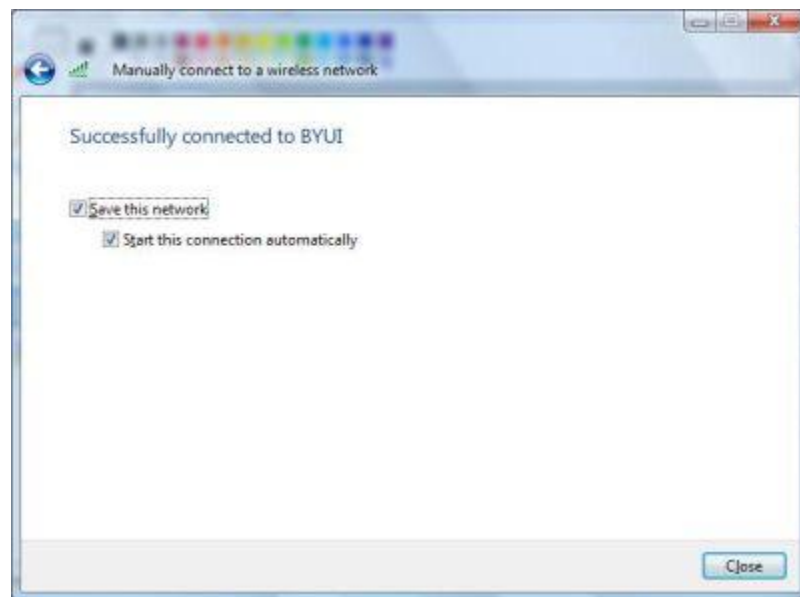
4. In the **User Name** field, enter your campus username (**NetID**), and in the **Password** field, enter your **Password**. Leave the **Logon domain** blank. Click **OK**.



5. The same **Enter/Select additional log on information** window will appear. Click it again.
6. A **Validate Server Certificate** window will appear. Click **OK**.



7. When it is successful, you will see a **Successfully connected to BYUI** window. Check **Save this network** and **Start this connection automatically**. Click **Close**.



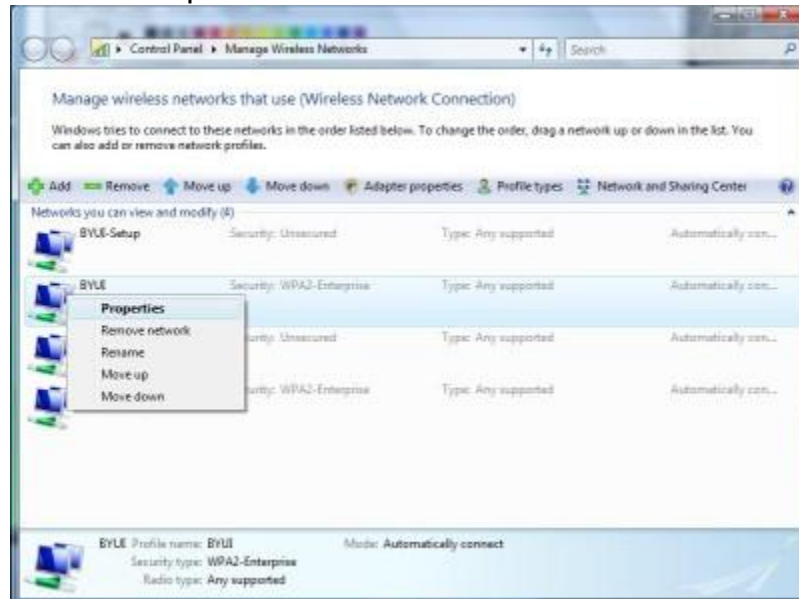
8. Open your internet browser (Internet Explorer, Firefox, etc.) and you should be able to surf.

If you still can't connect, continue with these steps:

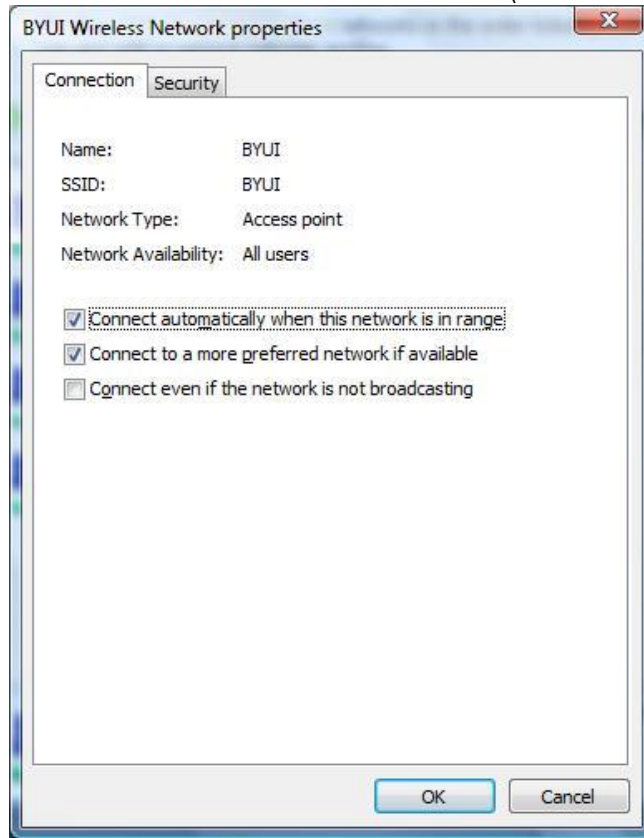
1. Right click the wireless connection icon in the bottom right corner of your screen (in the taskbar) and select **Network and Sharing Center**.
2. Click **Manage wireless networks** in the left hand column.



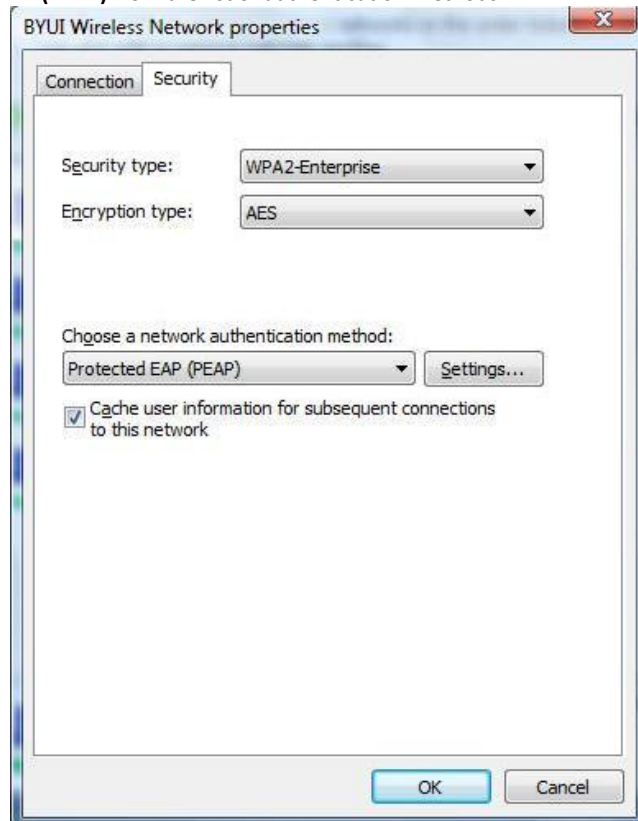
3. Right click on the **BYUI** network and select **Properties**.



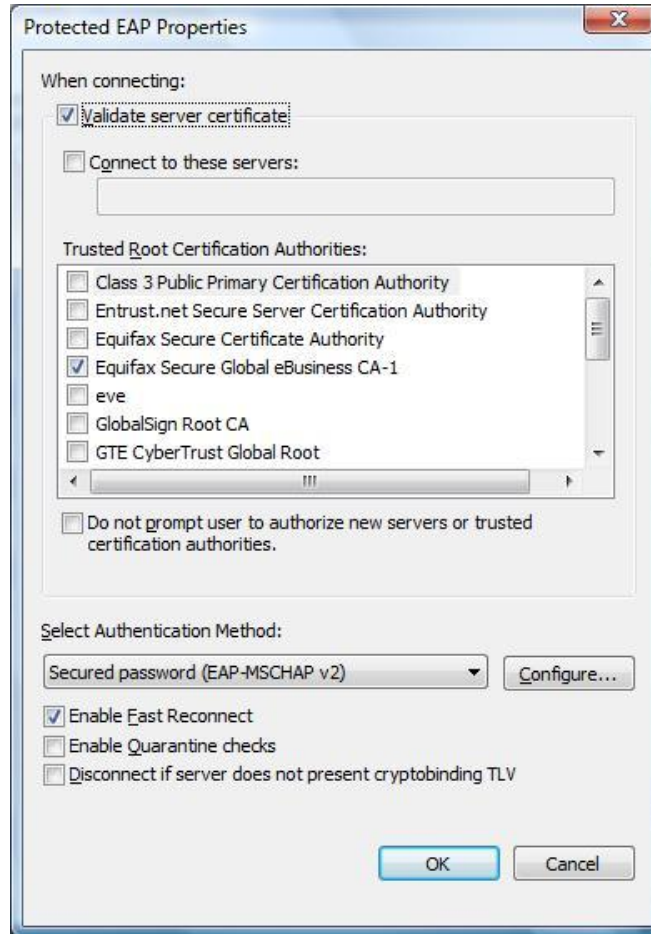
- 4. On the **Connection** tab, make sure **Connect automatically when network is in range** and **Connect to a more preferred network if available** are both checked. Ensure that **Name** is **BYUI** and **SSID** is **BYUI**. (BYUI needs to be in capital letters.)



- 5. Click the **Security** tab. Select **WPA2-Enterprise** (or **WPA** if WPA2 is not available) next to **Security type** and **AES** (or **TKIP**) next to **Encryption type**. Select **Protected EAP (PEAP)** from the list of authentication methods.



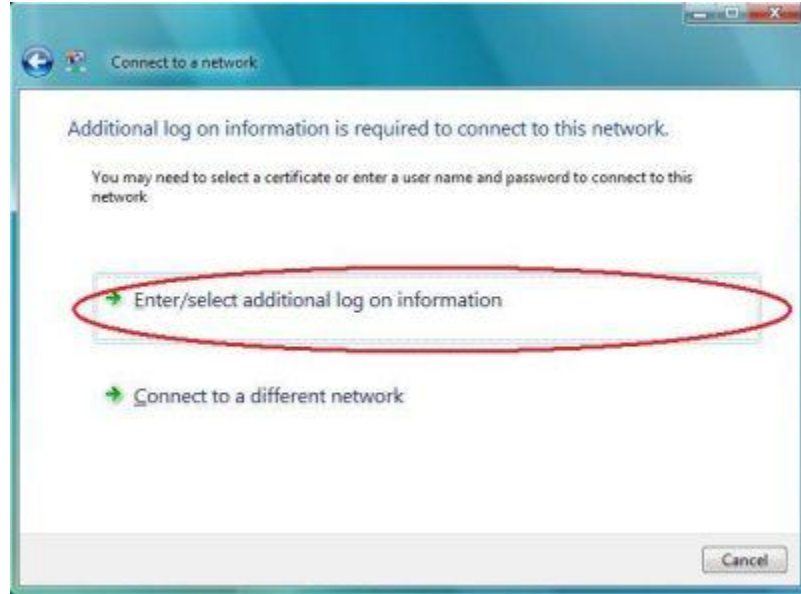
6. Click **Settings...** Make sure that **Validate server certificate**, **Equifax Secure Global eBusiness CA-1**, and **Enable Fast Reconnect** are all checked. Then click **Configure**.



7. Uncheck the option of Automatically using you Windows logon name and password. Click **OK** on all the windows and exit all open windows.



8. Right click the wireless connection icon in the bottom right corner of the screen and select **View Available Wireless networks**. Double click **BYUI**.
9. Once it is connected to the **BYUI** network a box like the one below will pop up. Click **Enter/Select additional log on information**.



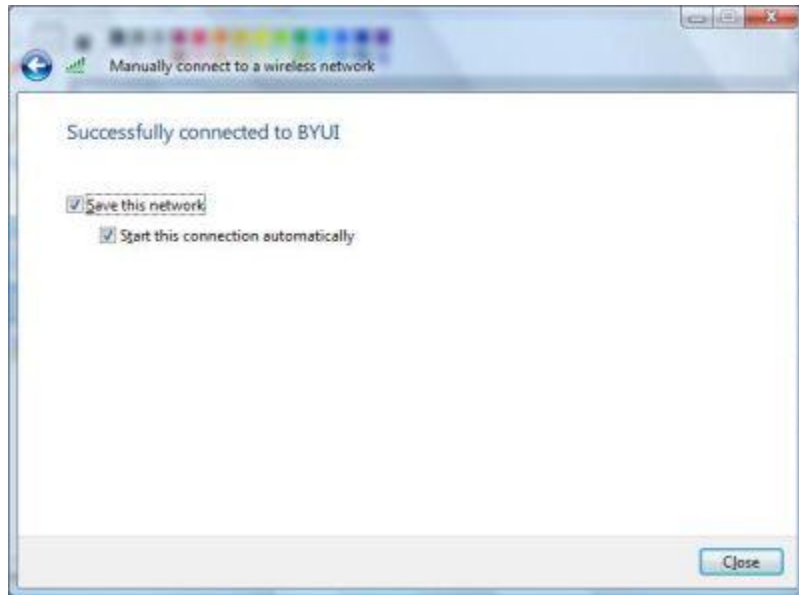
10. In the **User Name** field, enter your campus username (**NetID**), and in the **Password** field, enter your **Password**. Leave the **Logon domain** blank. Click **OK**.



11. Click **Enter/Select additional log on information** again when it appears.
12. A **Validate Server Certificate** window will appear. Click **OK**.



- 13. When it is successful, you will see a **Successfully connected to BYUI** window. Check **Save this network** and **Start this connection automatically**. Click **Close**.



- 14. Open your internet browser (Internet Explorer, Firefox, etc.) and you should be able to go on the web.

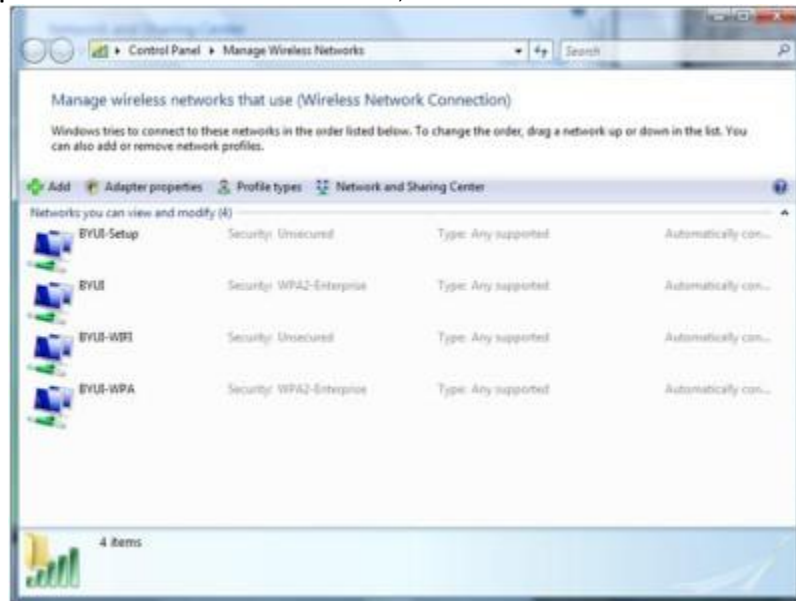
More to try:

Remove all previous wireless networks.

1. Right click the wireless computer icon in the bottom right hand of the screen and select **Network and Sharing Center**.
2. In the left column select **Manage wireless networks**.



3. Look in the section **Networks you can view and modify**. It will not appear exactly as the box below but if **BYUI** is shown click it once and click **Remove**. If **BYUI-Setup** is shown click it once and click **Remove**, then exit out of all windows.



4. Follow the steps outlined in the **Windows Vista Setup** section above to connect.