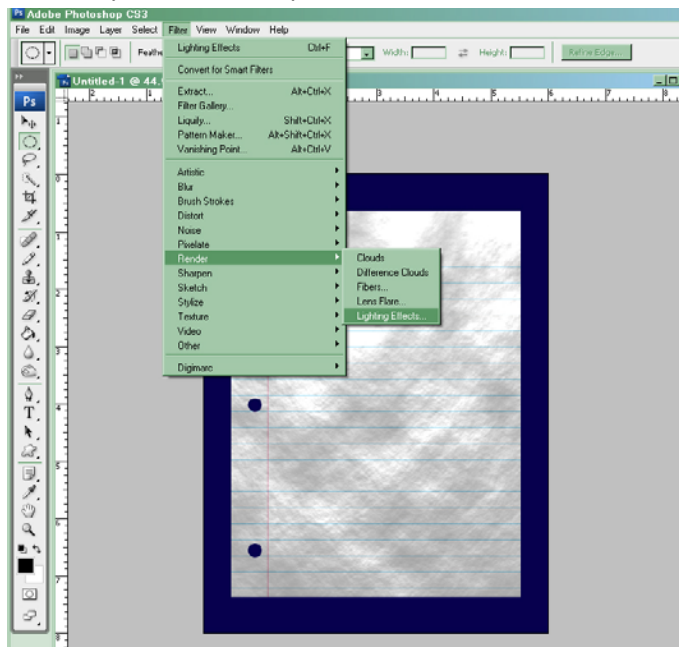
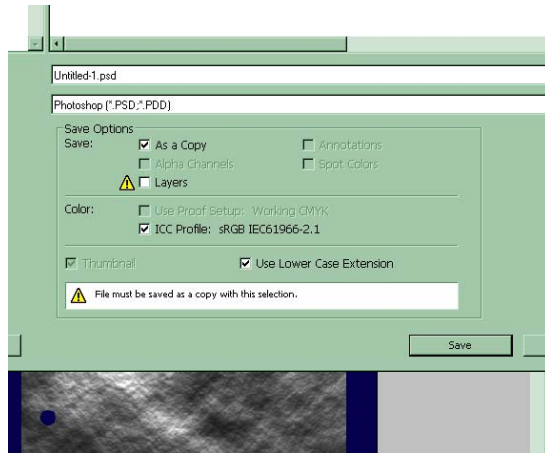


## CRUMPLED PAPER EFFECT

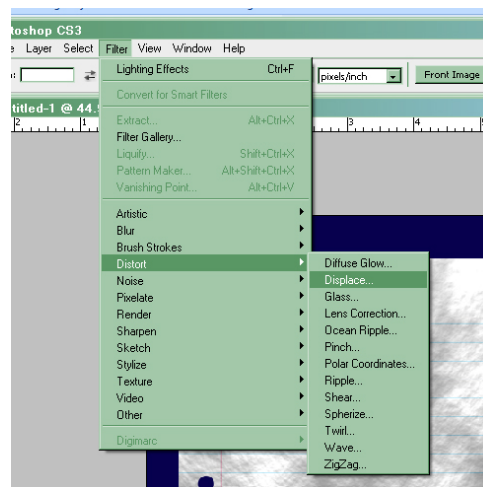
1. Create a new photoshop document with a size of 6x8 with a resolution of at least 150ppi.
2. Hit shift+delete or shift+backspace to fill layer with a dark color(black or blue)
3. Create a new layer and fill it the same way but with white.
4. Select the horizontal line marquee tool and a blue color for the horizontal lines of the paper and select the position for the first line.
5. Hit Option Delete or Alt Delete to fill the line with the blue color.
6. Push alt control T, and then move the line down while holding shift to the location of the next line and hit enter.
7. Hold down Control Alt Shift and press T repeatedly to repeat the line down the full page.
8. Then select the vertical line marquee tool and a red color and make a line for the red margin on the page. Then hit option delete, or alt delete to fill it with the red color.
9. Hit control D to deselect the line.
10. Then select the elliptical marquee tool and make a circle for the binder holes. Hold shift to keep it circular when forming the circle.
11. Hit delete to remove the hole. While it is still selected move it down while holding shift and delete the other 2 holes.
12. Now you have your page. Right click the layer and save it as a smart object for editing later.
13. Hit Control T to enable the transform tool and then hold down shift option to shrink the page a little bit. Then hit enter.
14. Now create a new layer and make sure the foreground and background color settings are set to black and white.
15. Go up to filter->render->clouds while new layer is selected.
16. Then go to filter-render>lighting effects and make sure that spotlight is selected and it is shining on the layer from the top. Set the texture channel to red.



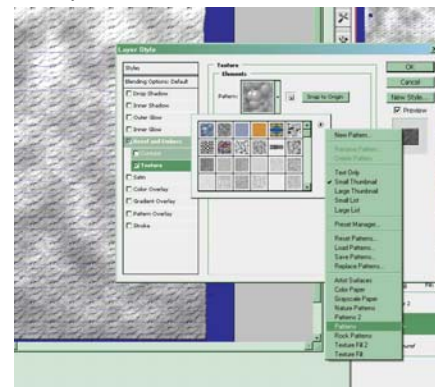
17. While the new layer(cloud) is selected, save it on the desktop and uncheck Layers to save it as a copy.



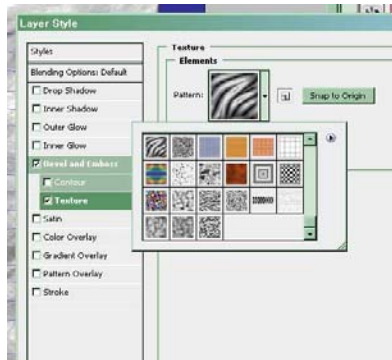
18. Move the selector arrow in between the top two layers(paper and clouds) and click while pressing Alt or option button. This will apply the cloud effect to just the paper layer.
19. Reduce the opacity to around 50% on the cloud layer.
20. Then open the saved cloud psd and set a Gaussian blur of 6 pixels(Filter->Blur->Gaussian blur) then save it and close it.
21. Select the cloud layer from the main document and go the menu and select Filter->Distort->Displace. Keep settings default settings at 10. Then open the clouds psd that was saved to apply the displacement.



22. Now select the paper layer and double click it to open the blending options.
23. Check Bevel and Emboss and the Texture box, then under the patterns list click on the small arrow to the right of that box to append more patterns.



24. Click on the “patterns” and append it to the current list of patterns. Under these patterns you will find a zebra pattern.



25. Select the Zebra pattern and put the scale all the way up to 1000% and leave the depth around 100. You can also drag the pattern around the image to match it up with wrinkles.
26. If you want to add writing to the paper open that layer up by double clicking on the smart object icon on the layer. This will bring up a clean page you can write on, then save it and the changes will show up distorted.
27. That’s it. For reference check out this video tutorial: <http://www.planetphotoshop.com/crumpled-paper.html>

